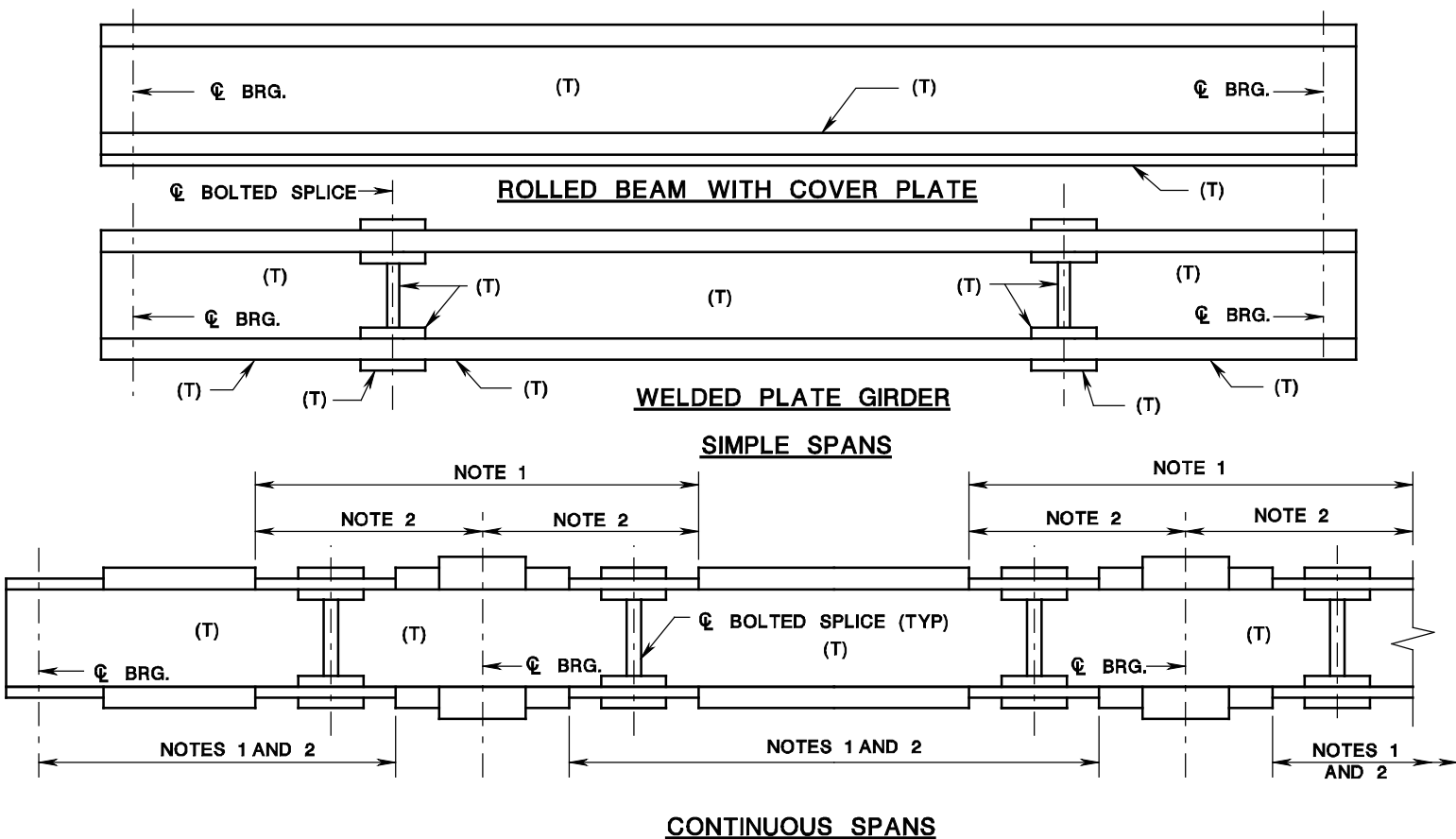


# TOUGHNESS REQUIREMENTS, CHARPY V-NOTCH TESTS

ISSUED: 2009

PLATE  
3.9-21

REFERENCE SUBSECTION 24.2.4 AND 24.2.5 OF THIS MANUAL AND NJDOT STANDARD SPECIFICATIONS.



## NOTES:

- (T) DESIGNATION SHALL BE SHOWN FOR ALL TOP OR BOTTOM FLANGE PLATES, WEB PLATES, WEB SPLICE PLATES AND TOP OR BOTTOM FLANGE SPLICE PLATES WITHIN THESE LIMITS THAT ARE UNDER TENSION FROM D.L., OR L.L. OR BOTH. WHEN AN OPTIONAL BOLTED FIELD SPLICE IS SHOWN ON THE PLANS IN THIS AREA, ADD: "IF THE OPTIONAL BOLTED FIELD SPLICE IS NOT USED, TOUGHNESS REQUIREMENTS SPECIFIED ARE MANDATORY FOR THE TOP FLANGE PLATE."
- DESIGNER SHALL FURNISH DIMENSIONS AT THESE LOCATIONS TO DEFINE TENSION LIMITS.